

Geography and
Environment

UNIVERSITY OF
Southampton



TACKLING THE CHALLENGES OF OUR **CHANGING WORLD**

Geography and Environment
Undergraduate Courses 2017

Contents

- 04 A global university
- 28 Course overview
- 30 Course information
- 34 Applying and funding
- 35 International students
- 36 How to find us
- 38 At-a-glance guide

SOUTHAMPTON

First-year BSc Geography students conducting research in the New Forest as part of their one-week field course, exploring vegetation and stream dynamics.



Reach your goals at Southampton by combining your ambition, your talent and our support.

Choosing the right place to study is an important decision, with many factors to think about. Join us, an institution in the top one per cent of world universities[†] and a founding member of the Russell Group of research-intensive UK universities. At Southampton you are taught by world-leading academics on courses that are designed around you. We get you ready for the global jobs market, while giving you a great student experience in a vibrant, diverse environment.

Study with us and you'll join one of the UK's top 15* and one of the world's top 50[‡] geography departments. We rank fifth in the country for the quality of our research publications** and our student satisfaction scores have increased year on year to 92 per cent.[§]

CHOOSE MPTON

† QS World University Rankings, 2015/16

* *Complete University Guide* 2016, the *The Guardian* university league tables 2017

‡ QS World University Rankings by subject 2016

** Research Excellence Framework 2014

§ National Student Survey 2015

CHOOSE SOUTHAMPTON: A GLOBAL UNIVERSITY

The city of Southampton has a history of innovation and exploration. As a forward-thinking University, we uphold these values in our education and research; join us to forge your successful future.

- ➔ As an institution we offer study abroad opportunities in 54 countries in Europe and across the world
- ➔ Our 200,000 graduates are part of a network of professionals that covers 180 countries
- ➔ Our academics make a difference on every continent
- ➔ Our business, government and non-government organisation partners span the globe
- ➔ We are part of the Worldwide Universities Network, a collaboration of knowledge from around the world

WORKING TO REDUCE YOUTH SMOKING

Professor Graham Moon and colleagues have developed a new data model that for the first time gives insight into smoking variations across England

LEARNING IN THE FIELD

Overseas fieldwork can take place in a variety of destinations such as Amsterdam, Paris, Tenerife, Cambodia, Berlin and Arolla (Swiss Alps)

We are
in the
TOP 1%
of global
universities

INVESTING IN DNA

We explore lake sediments and ancient DNA to help us look back at past and current climates; our new DNA lab launches in autumn 2016



CLIMATE CHANGE IN THE SOUTH PACIFIC

Professor Pete Langdon, with colleagues, is studying the dynamics of long-term climate change and impacts on societies in the South Pacific

Study abroad:
we have over
400 links
with **233** partners
in **54 countries**
around the world



SAFE DRINKING WATER

Research conducted by Dr Jim Wright as part of an international team exploring safe drinking water worldwide was selected among UNICEF's best research projects 2015



COMBATting UK FLOODING

Flooding expert Professor David Sear and team have shown that strategic planting of trees could reduce flooding in towns downstream by up to 20 per cent



STUDENT EXCHANGE

BSc Geography student Natasha Wallum studied a semester abroad at Western University, Ontario, Canada

Study opportunities include: **Australia, Canada, Ireland, Hong Kong, France, Germany and the Netherlands**

 **Find out more**
[www.southampton.ac.uk/
geography/research](http://www.southampton.ac.uk/geography/research)



WHAT'S YOUR **AMBITION?** TO STUDY THE IMPACT OF CLIMATE CHANGE ON RIVERS

Eleanore Heasley

BSc Geography, 2015

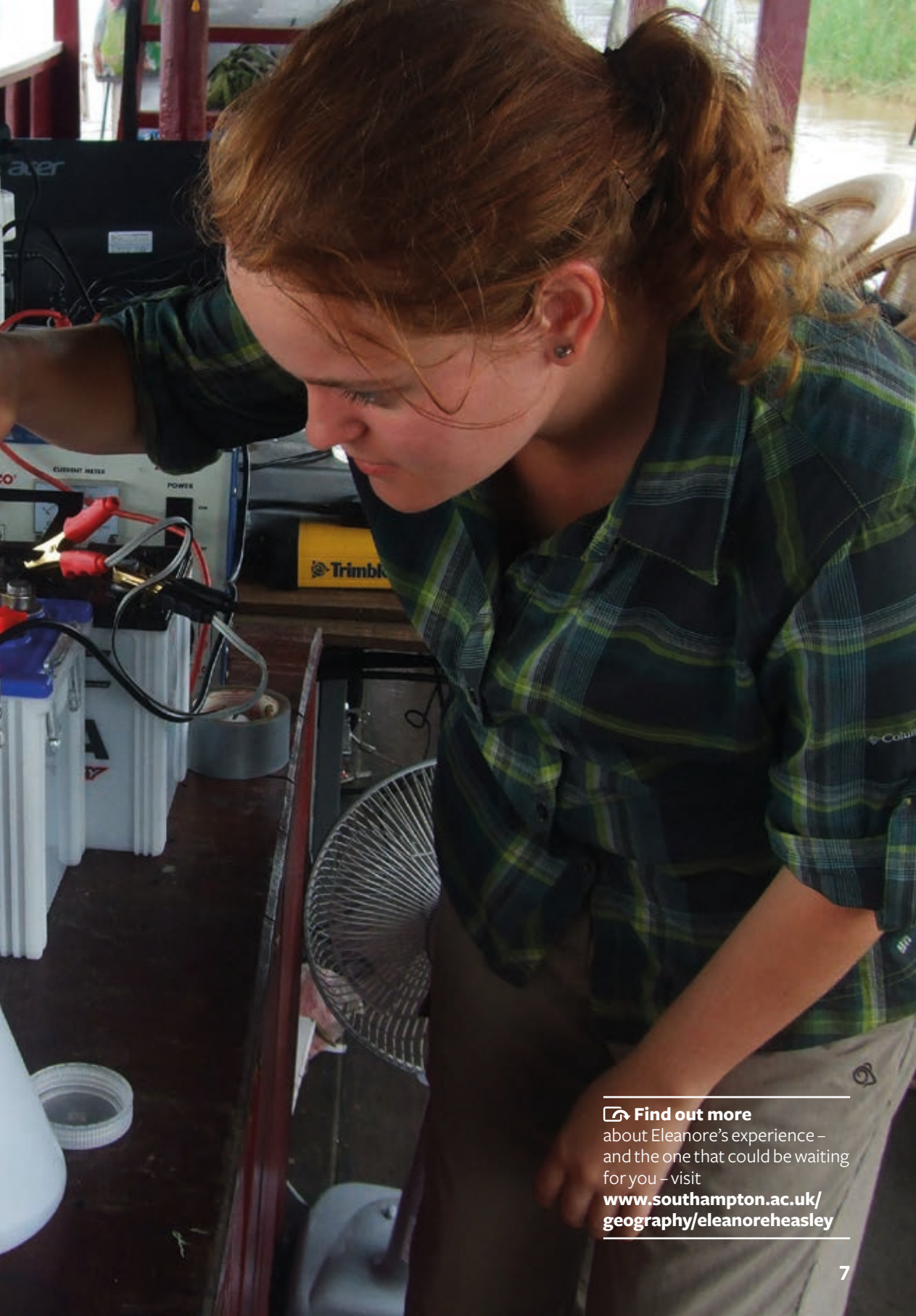
During a four-week trip to South East Asia Eleanore undertook regular transects on the Mekong. Her activities involved using specialist equipment to monitor river velocity and collect suspended sediment samples.


“I was really excited to join a research team in Cambodia studying the way climate fluctuations affect the transfer of sediment along the Mekong River. This was made possible by a Royal Geographical Society fieldwork bursary that my lecturer supported me to apply for.

“It was an amazing opportunity and has shaped everything I have done since – I have chosen every module available on rivers! The experience also helped me to get an internship with an environmental charity looking at freshwater quality.

“I’m studying for a PhD in environmental research and in future I’d love to work in river management.”

Filtering suspended sediment samples from the Mekong River



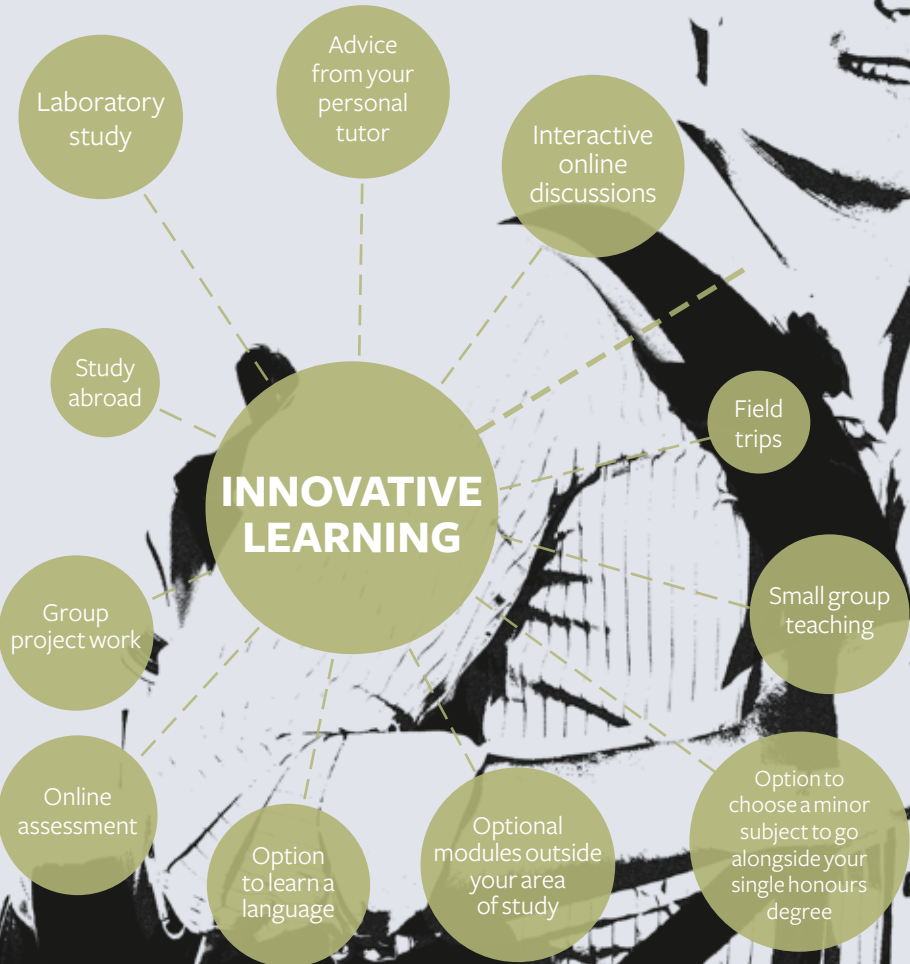
 **Find out more**
about Eleanore's experience –
and the one that could be waiting
for you – visit
[www.southampton.ac.uk/
geography/eleanoreheasley](http://www.southampton.ac.uk/geography/eleanoreheasley)

CHOOSE SOUTHAMPTON: DESIGN YOUR OWN EDUCATION

Your courses are developed and taught by world experts

Your course offers you breadth as well as depth

- ➔ Be independent and shape your course
- ➔ Attend lectures and seminars and access many lectures and learning resources on the move
- ➔ Enjoy a flexible course that is shaped by your interests and the needs of leading employers





OUR PEOPLE

Our people have a passion to change the world through their research and collaborations with global partners.

- Our lecturers push the boundaries of knowledge
- Benefit from our research-active academic team; their work informs your education
- We provide you with a rich curriculum with additional opportunities to broaden your multidisciplinary knowledge
- You are involved with important research as it unfolds
- Join us and share our knowledge to gain your advantage

PROFESSOR STEPHEN DARBY **HEAD OF GEOGRAPHY AND ENVIRONMENT**

Professor Darby is Vice Chair of the British Society for Geomorphology and Head of department leading a vibrant academic team. Stephen's research interests include earth surface dynamics, morphodynamics of large, monsoon-affected rivers, modelling river dynamics, floodplain processes and landscape evolution modelling.

His current research focuses on the impact of cyclones on sediment delivery

DR JULIAN LEYLAND
DIRECTOR OF
ADMISSIONS &
LECTURER IN PHYSICAL
GEOGRAPHY

In his latest research Julian is collaborating with engineering colleagues to develop the use of unmanned aerial vehicles (UAVs) for monitoring dynamic earth surface processes



DR SALLY HAYWARD
DIRECTOR OF
STUDENT SUPPORT

An expert in periglacial geomorphology, Sally is also Director of Student Support. Her award-winning dedication ensures students make a successful transition to university-level learning



DR SAMANTHA COCKINGS
ASSOCIATE PROFESSOR
IN GEOGRAPHY

Dr Cockings specialises in analysing and mapping population-related information; her work has been used by the Office for National Statistics to enhance census data in various ways. Samantha is also International Liaison for the department



DR BRIAN HRACS
LECTURER IN HUMAN
GEOGRAPHY

Brian's teaching is informed by his research into the way digital technologies and global competition are reshaping aspects of the creative economy, including the music industry



 **Find out more**
[www.southampton.ac.uk/
geography/people](http://www.southampton.ac.uk/geography/people)

CHOOSE SOUTHAMPTON: CHANGE THE WORLD

Using mobile phone data to support disaster relief

Geography and Environment researchers are using mobile phone data to track the movement of people affected by the devastating earthquake in Nepal in 2015. The information is helping to support the continuing relief effort in the country.

Every time a person uses a mobile phone it sends information to a receiving tower, including their approximate location. This information, repeated multiple times across millions of users, can provide a detailed picture of population movement and density and how they change over time in a given area.

Professor Andy Tatem says: "Although we have used mobile phone data before to measure population movements, this is the first time we have used the method in an ongoing 'live' situation. By watching how the population moves on a daily basis, we have been able to help directly with aid efforts and the rebuilding of infrastructure."

The work in Nepal is being conducted by two international collaborative programmes – the WorldPop project and the Flowminder Foundation – in which Andy plays leading roles. The researchers are using similar techniques to help tackle other pressing global issues, such as the control of infectious diseases.

ELIMINATING MALARIA


Our researchers are contributing their mobile phone data expertise to Bill and Melinda Gates Foundation initiatives on eliminating malaria

EPIDEMIC PREVENTION

Our population modelling techniques have predicted a future rise in measles cases in West Africa due to interrupted immunisation programmes during the Ebola crisis

RESEARCH-LED LEARNING

Andy lectures on the Dangerous World module, which examines communities' responses to today's environmental and socio-economic challenges



Professor Tatem and colleagues began daily monitoring of mobile phone data a week after the 2015 Nepal earthquake.

 Find out more
[www.southampton.ac.uk/
geography/mobiletracking](http://www.southampton.ac.uk/geography/mobiletracking)

TEACHING & LEARNING

We offer you more than just a traditional learning environment.

With access to virtual learning 24 hours a day, and the opportunity to design your own education by taking modules outside your chosen discipline, or studying abroad, Southampton provides a unique learning experience.



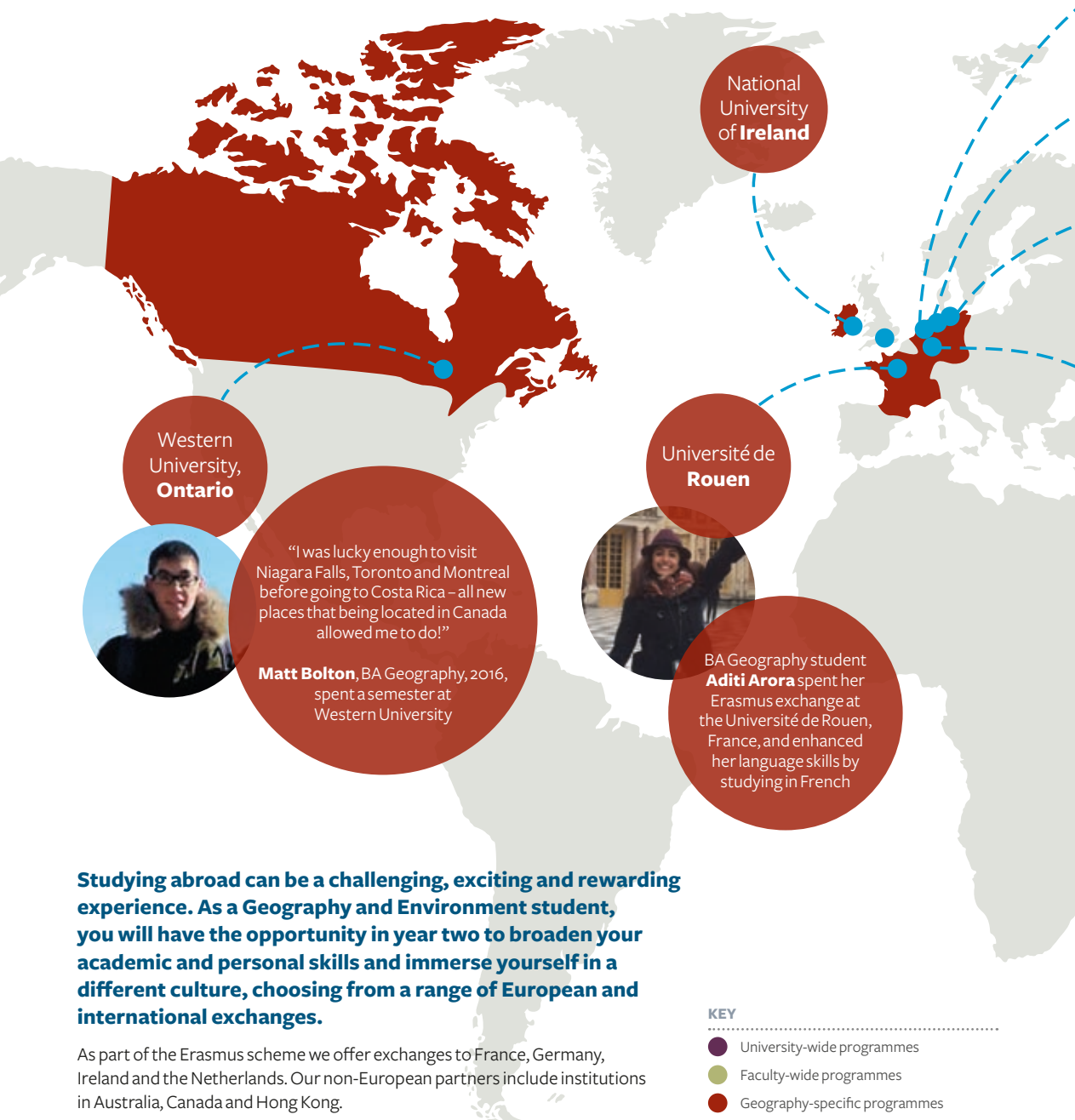


“I really enjoyed the wide range of optional modules available on this course, which enabled me to discover the aspects of geography I am particularly passionate about.”

Lydia Herbert
BSc Geography, 2015

Find out more
www.southampton.ac.uk/flexible

CHOOSE SOUTHAMPTON: A WORLD OF OPPORTUNITIES





CHOOSE SOUTHAMPTON: CHANGE THE WORLD

Our courses are informed by the research strengths of our academic team; these include cutting-edge areas of human geography.

One example is our Experimental Geographies module, developed by social geographer, urban explorer and photographer Dr Bradley Garrett. Bradley's research is inspired by his fascination with hidden, overlooked and forgotten environments. A seasoned 'place-hacker', his books recount his experiences of urban exploration – the controversial practice of venturing into off-limits buildings and spaces. These expeditions have taken him from the depths of disused London underground stations to the top of the Shard building while it was still under construction. "All of my projects work to reveal, through experiential engagement, what is hidden from plain sight," says Bradley.

Bradley's pioneering third-year Experimental Geographies module gives students the opportunity to experience hidden spaces for themselves by exploring abandoned buildings and telling stories about these spatially marginalised places through audio, video or photography. The module also features guest lecturers from different creative perspectives, including psychogeographer Will Self and leading sound artists and filmmakers.

Experimental Geographies intertwines theory and methodology and you will have the ability to submit course material in a range of critical and creative formats including video, audio and photography.

CREATIVE PERSPECTIVES

Rethink abandoned spaces
on the participative Experimental
Geographies module

EUROPEAN DESTINATIONS

Visit Berlin, Amsterdam or
Paris on a human geography
field trip to gain historical and
social perspectives on urban
cityscapes

EXPERT TEACHING

Our team of human geography
academics have a range of
expertise including labour
markets, social justice and welfare,
migration, and creative industries
and the digital economy

Photo credit: Dr Jonathan Prior

 **Find out more**
[www.southampton.ac.uk/
geography/hiddenspaces](http://www.southampton.ac.uk/geography/hiddenspaces)

YOUR STUDENT EXPERIENCE

Our six campuses all offer a friendly, vibrant and diverse atmosphere for work and leisure.

Campuses

Highfield Campus caters for most of our academic courses. Incorporating state-of-the-art research and teaching facilities, it boasts new and refurbished student facilities such as the Students' Union and the Jubilee Sports Centre.

Avenue Campus houses a state-of-the-art £3m Archaeology Building and is located on the edge of Southampton Common, a short walk from Highfield.

The University's collaboration with Lloyd's Register represents one of the largest business partnerships with any single university in the world. Our new Southampton Boldrewood Innovation Campus is the result of this partnership and is home to the Southampton Marine and Maritime Institute.

The National Oceanography Centre Southampton is our waterfront campus and is one of the world's leading research centres for the study of ocean and earth sciences.

Winchester School of Art is located 12 miles north of Southampton, in Winchester city centre. The campus provides purpose designed studios and workshops, an extensive specialist library, students' union facilities, a café and a well-stocked art supplies shop.

Our branch campus for engineering is in EduCity, Iskandar in Malaysia and benefits from innovative world-class facilities for engineering and full access to the learning resources at our UK campuses. It offers undergraduate students the opportunity to study in a safe international environment.

Southampton General Hospital is home to University Hospital Southampton NHS Foundation Trust and is a major centre for teaching and research in association with the University.

Social life

Run by students for students, the Union Southampton offers a wide range of services and opportunities for you to get the most out of your free time.

- Experience Freshers' – a full programme of activities to help you settle in
- We've got over 350 student groups (sports clubs and societies) that you can join, from archery, quidditch and performing arts to debating and life drawing
- Join GeogSoc, a society for students studying geography. It's a great way to make the transition to university life and meet and socialise with people from your course





03



02

- 01 National Oceanography Centre Southampton
- 02 The Shackleton Building, home of Geography and Environment at Southampton
- 03 Cook and socialise
- 04 Oxford Street
- 05 Try Taekwondo



04

You can socialise with friends in one of our bars or cafés on campus and in our halls of residence, as well as in the city of Southampton.



05

- Help local people: get involved in community volunteering projects and fundraising
- Socialise with friends in one of our bars or cafés on our campuses and in our halls of residence
- See high-profile acts, from Jess Glynne to Sub Focus, or have a quiet evening with friends; the Union has something for everyone, all year round
- Catch a film in our 330-seat cinema
- Dance the night away in our large venue for big events and gigs
- Become a DJ or director at Surge Radio and SUSUtv

- Try out journalism for the *Wessex Scene* or *The Edge* magazines
- Get free and confidential advice from the Advice Centre
- Buy your essentials in The Shop
- We are here to take action on a wide range of issues that are important to you. For example we have recently set up our own letting agency that can help you find student housing due to student demand
- Have fun and give back with RAG (Raise and Give) which organises fundraising events to benefit local and national charities

Sport

- Swim in our six-lane, 25-metre pool or use the varied fitness equipment across our nine gyms: six on campus and three more in the city
- Compete on over 20 grass and synthetic pitches for summer and winter sports
- The Union Southampton caters for 98 sports clubs – more than any other UK university. From beginners to national competitors, we provide members with excellent sporting activities at a subsidised cost

 **Find out more**

www.southampton.ac.uk/life

ACCOMMODATION

Get the best out of your student life: stay in one of our 6,800 student rooms in halls.

You can choose from a range of room types that includes a new development of over 1,400 rooms in Southampton city centre.

Take advantage of our guaranteed offer* of accommodation, for new first-year undergraduate students.

Live in either self-catered halls of residence with well-equipped communal kitchens, or part-catered accommodation where you enjoy the benefits of breakfast and evening meals throughout the week, plus some other meals at the weekend.

Benefits of halls accommodation include:

- a great student community
- good value and competitive prices that include utility bills, internet and a unilink bus pass
- unilink connects all our Southampton halls sites with our Southampton campuses
- facilities include common rooms, bars, launderettes, computer rooms, barbecue areas and much more
- out-of-hours support and advice from the Residences Support Service
- 24-hour security and CCTV on all sites

*Our guarantee to you

If you are a registered first-year undergraduate student new to the University, starting a full-time course, with no dependants, you will be guaranteed an offer of halls accommodation as long as you fulfil the full criteria of the guarantee, which includes applying before 1 August.

To uphold the guarantee, in years of exceptional demand we may offer accommodation in a twin shared room at the start of the academic year for a short period of time.

You also have the opportunity to apply for continuing years in halls. Although this cannot be guaranteed, we will always offer students accommodation if we have the availability.

For more information on our guarantee to you, visit www.southampton.ac.uk/accommodation/guarantee

Private rented accommodation

Private rented accommodation is available in Southampton and Winchester as an alternative to halls.

We are a core partner in the Southampton Accreditation Scheme for Student Housing (SASSH), which only advertises properties where the landlord agrees their property complies with SASSH safety and quality standards.

How to apply

Our guidance and applying for accommodation timeline make the process as easy for you as possible.

You can apply for your accommodation when you have received your formal offer of study with your student identification number, the eight-digit number given to you by the University. Find out more and apply at www.southampton.ac.uk/accommodation/apply

JUNE 2017

Allocation and offer of rooms starts for deferred students and students with unconditional offers, who have applied for accommodation before 31 May 2017

JANUARY/ FEBRUARY 2017

Accommodation application opens and goes live online

1 AUGUST 2017

New students must have applied for accommodation before this date

MIDDLE OF SEPTEMBER 2017

Allocation of rooms completed

APPLICATION TIMELINE

MIDDLE OF AUGUST 2017

After A level results, allocation of rooms to all students begins

23-24 SEPTEMBER 2017

Moving in weekend!



01



02



Our halls of residence sites have a great community feel; facilities range from common rooms, bars and launderettes to computer rooms and barbecue areas.



03

- 01 Green and spacious gardens
- 02 Internet connections in all rooms
- 03 Plenty of social and outdoor spaces
- 04 Excellent facilities

04

 **Find out more**
www.southampton.ac.uk/life

CHOOSE SOUTHAMPTON: SHAPE YOUR FUTURE

A degree from Southampton opens doors to career opportunities.

Southampton fast-tracks your ambitions

- ➔ We prepare you for future challenges not yet imagined and jobs not yet thought of
- ➔ We are among the top 20 UK universities targeted by the largest number of top 100 graduate recruiters*
- ➔ In the most recent Destinations of Leavers from Higher Education (DLHE) statistics, 94 per cent of graduates whose destinations were known were in employment and/or further study
- ➔ We are in the top 25 UK universities for graduate prospects**
- ➔ We are privileged to have four University Service Units offering unrivalled opportunities for personal development through leadership and skills training, all of which are fully transferable to civilian careers

Take advantage of our exciting postgraduate opportunities

- ➔ Deepen your knowledge and boost your employability with one of our innovative masters courses
- ➔ Our new MSc Sustainability addresses the critical global sustainability challenges facing developed and developing countries
- ➔ Other taught masters programmes include MSc Applied Geographical Systems and Remote Sensing, which focuses on real-world problems in areas such as public health and environmental management

Southampton graduates are successfully employed at high-profile organisations such as:

AJ Walter Aviation	Forum for the Future
British Army	Greenredeem
Block and Quayle (B&Q)	Hydro-Logic Group
Cain Bio-Engineering	Office for Gas and Electricity Markets (Ofgem)
Department for Culture, Media and Sport	Royal Navy
Deloitte	Transport for London

* *The Graduate Market in 2016*, produced by High Fliers Research

** *Complete University Guide 2016*



OPPORTUNITIES

Specialise further with a postgraduate degree

Career mentoring

Careers information, advice and guidance

Network with top employers

Careers fairs

Presentations and workshops

Work placements & internships

Volunteering

Enterprise

 Find out more
www.southampton.ac.uk/careers

CHOOSE SOUTHAMPTON: CHANGE THE WORLD

Apply your knowledge in the field

Fieldwork is one of the most valuable and exciting elements of a geography degree. Day trips and residential courses in the UK and abroad enable you to put your knowledge into practice and develop your research skills.

Whether exploring stream dynamics, investigating the urban environment of a European city or studying glacial landscapes, our field trips offer a wide range of research topics with which you can actively engage. They are also a great way of getting to know your peers and academic staff.

Recent overseas fieldwork locations include Amsterdam, Paris, Berlin, the Swiss Alps and Tenerife. The compulsory field courses in years one and two are funded by the University, so you'll only need to cover incidental expenses during these trips.

An exciting addition to our residential field courses is our new integrated module, Water, People and Environment, which involves group project work on the Mekong River in Cambodia.

IN YEARS TWO & THREE

Based overseas, you will develop more focused techniques tailored to your chosen geography degree

FIRST-YEAR FIELD COURSES

Our UK-based trips introduce you to a range of general techniques

THEORY INTO PRACTICE

Apply your learning and gain invaluable technical and hands-on expertise

Considering how river bank erosion affects the lives and livelihoods of those living along the Mekong is just one of the many issues explored in our Water, People and Environment module.



[Find out more
www.southampton.ac.uk/
geography/fieldwork](https://www.southampton.ac.uk/geography/fieldwork)

COURSE OVERVIEW

Choose Southampton

- ➔ Flexible, interdisciplinary programmes with research projects in year three
- ➔ Overall student satisfaction is at 92%, rising for the fifth consecutive year (NSS 2015)
- ➔ Ranked 14th in *The Guardian* university league tables 2017
- ➔ Exciting fieldwork opportunities in Europe and South East Asia allow you to apply your knowledge in the field
- ➔ Outstanding academic team and world-class facilities
- ➔ International exchange opportunities in Europe, Canada, Hong Kong and Australia

**Top
50**

in the world; QS World
University Subject
Rankings 2016

Our research is
making an impact on all

7

continents

5th

in the UK for
research outputs
(Research Excellence
Framework, 2014)

Our terrestrial laser scanners
create high-resolution models
of the Earth's surface.

Our Geography programmes use cutting-edge technology and approaches to combine theory-based learning with practical field and project work.

Course structure

Our courses are designed to give you a firm grounding in key areas of geography and the flexibility to follow your interests.

In your first year you will study core modules across the discipline, learning about Earth processes, hazards, societies and cultures and geographical information systems (GIS). You'll also undertake UK-based fieldwork. Because the BSc and BA courses share core modules in year one, it's easy to move from one to the other if you change your mind about the path you want to take.

Your choice of modules expands as you progress through your degree so you'll have time to develop your interests before deciding which areas to study in more detail. Integrated modules enable you to study topics across the breadth of the discipline and you'll also have the opportunity to take modules in related subjects such as oceanography, sociology and psychology.

Field trips & exchanges

As well as local field work experience in year one, in year two, one of your modules will include a one-week field course abroad. Recent destinations have included Amsterdam, Paris and Tenerife. The cost of this compulsory trip is included in your course fees. In year three there are optional overseas field courses, for example to Cambodia, the Swiss Alps or Berlin.

If you're interested in studying overseas for a longer period (typically a semester), you could take advantage of exchange opportunities with our

partner institutions in Australia, Canada, Hong Kong, France, Germany, Ireland or the Netherlands.

How will you learn?

As well as lectures, seminars and supervision, we use a range of innovative learning methods such as fieldwork, laboratory study, private and public sector placements and group projects, all of which are supported by virtual learning environments. As well as gaining an in-depth knowledge of your subject, you'll develop essential transferable skills, such as teamwork and project management, that will enhance your employability.

Assessment methods will depend on the modules you choose, but are likely to include essays and reports, fieldwork reports, oral presentations, practical exercises, research posters and written examinations.

Concepts of sustainability are integral to our courses, enabling our students to become globally responsible citizens with an understanding of human, economic and natural resources and needs.

Facilities

You'll have access to specialist geography facilities, including:

- a purpose-built teaching laboratory for palaeoenvironmental and geomorphological analysis
- a dedicated geo-computational facility with state-of-the-art remote sensing equipment
- GIS programmes for large-volume data processing and modelling

Research project

The final-year research project will give you the opportunity to carry out a significant piece of independent research on a topic of your choice, usually through fieldwork or document-based research. Preliminary work and data collection begins towards the end of year two and you will develop the project over the following months, submitting your report after Easter in the final year. Your supervisor will give you regular support and guidance throughout the project to help you stay on track.

Student support

We aim to give you all the support you need to realise your academic potential. One-to-one meetings with your personal tutor will give you the chance to raise any course-related issues or queries. Your tutor can also help you with personal issues, or you can see Geography's award-winning Director of Student Support if you need to talk something through.

 **Further information**
[www.southampton.ac.uk/
geography/ugprogrammes](http://www.southampton.ac.uk/geography/ugprogrammes)

T: +44 (0)23 8059 3760

E: ugapply.fshms@southampton.ac.uk

UCAS Code: L700

Start date: September

Fees: www.southampton.ac.uk/fees

Typical offers require the following

A levels: AAA; including geography

EPQ: AAB including geography, with grade A in the extended project qualification

IB: 36 points, 18 at higher level

Intake: 90

Average applicants per place: 5

Language requirements: 6.5, with minimum of 5.5 in each component, or equivalent

Selection process: UCAS application

RELATED COURSES

BSc Population and Geography
www.southampton.ac.uk/study/popgeog

Career opportunities

Our graduates are highly sought after by employers and work in a diverse range of fields, including financial services, the retail sector, management, marketing, local government, public policy, the civil service, the BBC, education and the voluntary sector.

Find out more

T: +44 (0)23 8059 3760

E: ugapply.fshms@southampton.ac.uk

 **For course modules**
www.southampton.ac.uk/geography/l700

BA GEOGRAPHY

Gain a thorough grounding in human geography research approaches and choose from a range of modules exploring the cultural and socioeconomic factors that influence the interaction between people and the environment.

Course content

In your first year, you will gain a grounding in both human and physical geography and you will take part in fieldwork activities over a week, exploring socioeconomic landscapes of Southampton and practising research skills.

Year two involves a balance of core and optional modules. You will attend a specialist field trip to study the urban landscape of a European city. The individual research project in years two and three forms a major part of the degree programme. Involving personal fieldwork or documentary research in the UK or abroad, the project enables you to pursue your own particular interests in depth.

Year three addresses advanced, cutting-edge issues in geography, while field options include the production of urban space in Berlin and the interaction of water, people and the environment in Cambodia.

Programme structure

Year one | Core modules include

- Society, Culture and Space
- A Global World
- Dangerous World
- The Earth System
- Dynamic Landscapes
- Geographical, Quantitative and Field Skills

Year two | Core modules include

- Researching Human Geography
- Introductory Geographic Information Systems (GIS)
- Practising Human Geographical Research (field course)

Typical optional modules

- Advanced GIS
- Cultural Geographies
- Economic Geography
- Geographies of Wellbeing
- Unequal Geographies

Year three | Core modules

- Research project

Typical optional modules


- Advanced Human Geography (field course)
- Migration and Development
- Geographies of Health and Health Care
- Experimental Geographies
- Geographies of Social Justice, Welfare and Rights
- Ambassadors for Geographers
- People, Place, Environment: Cambodia Field Course
- The Creative Economy
- Geographies of Housing and Home
- Geographies of Nature



“There was a great mix of modules, ranging from Economic Geography to Geographic Information Systems. I liked the fact that I could still take BSc modules on the BA pathway.”

Camilla Pierleoni

BA Geography, 2014
Working as a Supply Chain Graduate
at United Biscuits



“The Introductory and Advanced GIS modules allowed me to specialise and gain skills which will be very relevant for future career opportunities.”

Taylor Day

BSc Geography, 2015
Studying MSc Applied GIS and Remote Sensing
at Southampton

This programme is designed for students interested in the physical and natural science aspects of geography. You'll have the opportunity to study a range of environments and practise a variety of monitoring and research techniques.

Course content

You will develop a broad understanding of both physical and human geography during your first year and take part in field work activities over the course of a week, exploring the vegetation and stream dynamics of the New Forest.

Years two and three focus on physical geography with a combination of core and optional modules in year two. You will participate in a field course where you will take part in small-group projects. Recent destinations have included Tenerife, Picos de Europa and southern Spain.

You will undertake an individual research project in years two and three. In year three you will address advanced, cutting-edge issues in geography. Field options include researching alpine landscapes in Arolla, Switzerland and the interaction of water, people and the environment in Cambodia.

Programme structure

Year one | Core modules include

- The Earth System
- Dynamic Landscapes
- A Global World
- Geographical, Quantitative and Field Skills
- Society, Culture and Space
- Dangerous World

Year two | Core modules include

- Physical Geography Experimental Techniques

- Physical Geography Research Techniques
- Exploring Physical Environments: Overseas Field Course
- Introductory Geographic Information Systems (GIS)

Typical optional modules

- Quaternary Environmental Change
- Coastal Landscapes and Human Interactions
- Global Climate Change
- Advanced GIS
- Remote Sensing for Earth Observation
- Global Water Resources

Year three | Core modules

- Research project

Typical optional modules

- Reconstructing Palaeoenvironmental Change
- Using GIS in the Workplace
- Arctic and Alpine Geomorphology
- Managing Rivers for Humans
- Glaciers and Glaciation
- Adapting to Climate Change and Weather Hazards
- Terrestrial Ecosystems: Carbon Monitoring and Modelling
- Desert Landscapes
- Biogeography
- Experimental Geomorphology for Real-World Challenges
- Arolla Field Course
- Water, People and Environment: Cambodia Field Course

UCAS Code: F800

Start date: September

Fees: www.southampton.ac.uk/fees

Typical offers require the following

A levels: AAA; including geography

EPQ: AAB including geography, with grade A in the extended project qualification

IB: 36 points, 18 at higher level

Intake: 90

Average applicants per place: 5

Language requirements: 6.5, with minimum of 5.5 in each component, or equivalent

Selection process: UCAS application

Career opportunities

Our graduates are always in demand for jobs directly related to geography such as environmental management and consultancy, urban and rural planning, GIS and economic development work.

They also work in a diverse range of fields beyond the discipline such as engineering, finance and management.

Find out more

T: +44 (0)23 8059 3760

E: ugapply.fshms@southampton.ac.uk

 **For course modules**
www.southampton.ac.uk/geography/f800

APPLYING AND FUNDING

We realise that going to university is a significant investment, so we'll ensure you have all the information you need to make an informed decision.

How and when to apply

- Applications should be submitted via UCAS (www.ucas.com)
- Our institution code is S27 and our code name is SOTON
- Read our Admissions Policy on our website
- The deadline for medicine is 15 October
- The deadline for all other programmes for UK and EU applicants is 15 January
- For international applicants, the deadline is 30 June, although we strongly advise you to apply as early as possible as some courses may no longer have vacancies after the January deadline
- UCAS will automatically forward your application to us and we will let you know when we have received it. For more information, visit www.southampton.ac.uk/apply

Tuition fees and funding

The University will set fees for 2017/18 when the government establishes limits for tuition fees. For 2016/17, the University set the tuition fee for UK students at £9,000 and we offer a large number of generous fee waivers and bursaries for eligible students.

For UK students from lower income families, these financial packages will be based on household income supplied to us by the Student Loans Company.

Your tuition fee may cover compulsory course costs, such as field trips and laboratory clothing; however a contribution may be necessary towards certain elements. Please check with the Admissions team for more details.

Visit our website for the latest information on tuition fees before you submit your UCAS form for entry in the 2017/18 academic year. Students who have applied for a deferred place in 2016/17 will be eligible for the 2017/18 tuition fees and support.

If you are a UK student you can apply for loans to help pay for both fees and maintenance. For more details, visit www.southampton.ac.uk/money

Channel Islands/ Isle of Man student fees

Fees are set by the islands' governments and UK universities are notified of the levels in the spring prior to the academic session in which students commence their programme of study.

International student fees for 2017

All programmes (including Foundation Year) in Arts, Humanities, Law, Social Sciences and Mathematics (excluding Geography and Psychology): £16,054 per year.

All programmes (excluding Foundation Year) in Engineering, Science, first- and second-year Medicine, Health and Life Sciences, Geography and Psychology: £19,725 per year.

Third-, fourth- and fifth-year Medicine: £40,230 per year.

Engineering and Science Foundation Year: £16,800 per year

Fixed fees

International students commencing their programme of study in 2017, will pay the same fixed fee for each year of their programme, with the exception

of programmes where a combination of clinical and non-clinical fees apply. In these instances, the non-clinical fixed fee will apply for years one and two, and the clinical fixed fee will apply for the remainder of the programme.

Scholarships and bursaries

We offer a variety of scholarships and progression awards to the most talented students across our subject areas. For full eligibility criteria and up-to-date information, visit www.southampton.ac.uk/scholarships

We also offer a range of bursaries designed to help UK undergraduate students in the most financial need. For more details and up-to-date information, visit www.southampton.ac.uk/bursaries

Geography visits

If you receive an offer you will be invited to attend a geography visit day (for offer holders). These provide an opportunity to learn more about our programmes and the learning environment here at Southampton. The schedule normally consists of a subject talk, 'taster' sessions in both human and physical geography, the opportunity to discuss your chosen course in small groups with academic staff, a chance to meet current students and an optional tour of a hall of residence. Visit days run from February through to March.

 **Find out more**
www.southampton.ac.uk/fees

T: +44 (0)23 8059 4732

E: admissions@southampton.ac.uk

INTERNATIONAL STUDENTS

Join us and students from more than 135 different countries at Southampton.

Living and studying in a different country has its own unique challenges. We make student entry straightforward, offer attractive scholarships to eligible applicants, help you settle into your new life and advise you on all aspects of living in the UK.

Our network of services and advisors ensure that your studies and life at Southampton is as productive and stress-free as possible.

International Office

Staff from our International Office attend educational exhibitions around the world as well as making numerous visits overseas and to colleges in the UK. If you are unable to visit us in Southampton, make sure you book an appointment to meet us at one of the exhibitions or join us on a virtual open day.

You will find a quick introduction to the University on our website, which is available in other languages. You can also view web pages with specific information for students from over 50 countries.

To join us on a virtual open day, visit [**www.southampton.ac.uk/virtualopenday**](http://www.southampton.ac.uk/virtualopenday)

Welcome Programme

In September each year, we arrange Welcome Programme, which helps you settle into life here. The week includes general events to introduce you to our facilities, subject-specific events to begin your academic induction and a range of social and cultural activities.

During the week, you will meet other undergraduate students and explore

the University and the city, so that you know where to worship, relax and shop. You will also meet current international students who will be able to give you good advice.

Meet and Greet

We organise a free Meet and Greet service for all new international and EU students in September each year. Our representatives meet you at Heathrow or Gatwick Airport and transport you directly to your accommodation. You can register for both the Service and the Welcome Programme from July on our website.

Visas

Before you join us, find out about the UK's immigration procedures. Do this well in advance of your arrival in the UK. Our website provides information on student visas, police registration, working in the UK and has links to other useful websites.

For more information, visit [**www.southampton.ac.uk/visa**](http://www.southampton.ac.uk/visa)

International scholarships

We offer a number of subject-specific scholarships and bursaries to international students. These are based on academic merit and vary depending on the subject.

English language requirements

All our programmes are taught in English and all applicants will be required to demonstrate their ability to express themselves in the English language to a sufficient standard. Applicants not holding a GCSE in English at grade C (or equivalent) may take one of our approved Secure English Language Tests (SELTs).

These currently include IELTS, TOEFL, Pearson PTE (Academic), the Cambridge Advanced and Proficiency tests, and the Trinity College London ISE test.


Pre-sessional programmes

The University offers a wide range of pre-sessional programmes for international students who are planning to come to the UK for undergraduate or postgraduate study at the University of Southampton.

These programmes will help you develop the English language skills you will need to follow a degree course or undertake research at a British university. For more information, please visit [**www.southampton.ac.uk/presessional**](http://www.southampton.ac.uk/presessional)

Studyabroad@southampton

We now offer international students studying at overseas institutions, the opportunity to study with us for a semester or up to a year. There are two Geography pathways available; 'Geography' and 'Protecting the Global Environment'. The Geography pathway allows students to choose from BA and BSc modules and our Protecting the Global Environment pathway gives students access to a wide range of academic perspectives to address issues relating to the global environment. For more information visit [**www.southampton.ac.uk/study-abroad**](http://www.southampton.ac.uk/study-abroad)

 **Find out more**
[**www.southampton.ac.uk/international**](http://www.southampton.ac.uk/international)



T: +44 (0)23 8059 9699

E: [**global@southampton.ac.uk**](mailto:global@southampton.ac.uk)





HOW TO FIND US



CAMPUS INFORMATION

-  University buildings
-  Halls of residence

TRANSPORT INFORMATION

-  Airport
-  Ferry terminal
-  Railway station
-  Coach station

 Find out more
www.southampton.ac.uk/campuses

TERMS & CONDITIONS

The University's Charter, Statutes, Regulations and Policies are set out in the University Calendar and can be accessed online at www.calendar.soton.ac.uk

Terms of use

This brochure does not constitute an offer or invitation by the University of Southampton to study at Southampton. This brochure provides an overview of the University and life at Southampton, along with information about all the undergraduate programmes available at the time of publication. It is provided for information purposes only. Relevant weblinks are shown throughout the brochure. Please also consult the programme information online for further details or for any changes that have appeared since first publication of the brochure.

The information contained in the brochure, welcome guides or on our websites is subject to change and may be updated by the University from time to time to reflect intellectual advances in the subject, changing requirements of professional bodies and changes in academic staff members' interests and expertise. Changes may also occur as a result of monitoring and review by the University, external agencies or regulators.

1. Change or discontinuance of programmes

The University of Southampton will use all reasonable efforts to deliver advertised programmes and other services and facilities in accordance with the descriptions set out in the brochure, student handbooks, welcome guides and website. It will provide students with the tuition and learning support and other services and facilities so described with reasonable care and skill.

We undertake a continuous review of our programmes, services and facilities to ensure quality enhancement. We are also largely funded through public and charitable means and are required to manage these funds in an efficient and cost-effective way for the benefit of the whole of the University community.

We therefore, reserve the right where necessary:

- to alter the timetable, location, number of classes, content or method of delivery of programmes of study and/or examination processes, provided such alterations are reasonable;
- to make reasonable variations to the content and syllabus of programmes of study (including in relation to placements);
- to suspend or discontinue programmes of study (for example, because a key member of staff is unwell or leaves the University);
- to make changes to our Statutes, Ordinances, Regulations, policies and procedures which we reasonably consider necessary (for example, in the light of changes in the law or the requirements of the University's regulators). Such changes if significant will normally come into force at the beginning of the following academic year or, if fundamental to the programme, will normally come into force with effect from the next cohort of students;
- to close programmes of study or to combine or merge them with others (for example, because too

few students apply to join the programme for it to be viable).

If the University closes, discontinues or combines a programme of study or otherwise changes a programme of study significantly (the "Change"), the University will inform applicants (or students where relevant) affected by the Change at the earliest possible opportunity.

- If the Change comes into force before the University has made an offer of a place or **before** an applicant has accepted an **offer** of a place, an applicant will be entitled to withdraw his or her application, without any liability to the University, by informing the University in writing within a reasonable time of being notified of the Change.
- If the Change comes into force **after** an **offer** has been accepted but prior to the student **enrolling**, the student may either:
 - withdraw from the University and be given an appropriate refund of tuition fees and deposits, or
 - transfer to another available programme (if any) as may be offered by the University for which the student is qualified.

If in these circumstances the student wishes to withdraw from the University and to apply for a programme at a different university, the University shall use its reasonable endeavours to assist the student.

- If the Change comes into force **after** a student has **enrolled**, the University will use reasonable endeavours to teach the programme out but cannot guarantee to do so. If the University cannot teach out a programme of study, it will use its reasonable endeavours to facilitate the transfer of a student to an equivalent programme for which the student is qualified and which has places available within the University or at a different university.

2. Changes to services or facilities

The University will make available to students such learning support and other services and facilities as it considers appropriate, but may vary what it provides from time to time (for example, the University may consider it desirable to change the way it provides library or IT support).

3. Financial or other losses

The University will not be held liable for any direct or indirect financial or other losses or damage arising from such closures, discontinuations, changes to or mergers of any programme of study, service or facility.

Upon acceptance by an applicant of an offer of a place at the University, the relationship between the applicant and the University becomes contractual. When the contract is formed between the student and the University it will last for the relevant academic year only unless the student withdraws from the programme or the programme is terminated. Please note: the right of a student to withdraw from a programme of study under the provisions set out in paragraph 1(b) above following a Change, are in addition to any statutory rights of

cancellation that may exist under the Consumer Contracts (Information, Cancellation and Additional Charges) Regulations 2013. In entering into that contract, the terms of the contract will not be enforceable by any person not a party to that contract under the Contracts (Rights of Third Parties) Act 1999.

Force majeure

The University will not be held liable for any loss, damage or expense resulting from any delay, variation or failure in the provision of programmes of study, services or facilities arising from circumstances beyond the University's reasonable control, including (but not limited to) war or threat of war, riot, civil strife, terrorist activity, industrial dispute, natural or nuclear disaster, adverse weather conditions, interruption in power supplies or other services for any reason, fire, boycott and telecommunications failure.

In the event that such circumstances beyond the reasonable control of the University arise, it will use all reasonable endeavours to minimise disruption as far as it is practical to do so provided that such endeavours do not undermine the University's Quality Assurance requirements.

Admissions Policy and Complaints

The University will assess applications in line with its then current Admissions Policy. The Admissions Policy, current at the time of publication, is published online and is available at www.southampton.ac.uk

The Admissions Policy is reviewed at least annually.

Applicants may raise complaints related to admissions under the University's Regulations Governing Complaints from Applicants, which can be found in the Calendar at www.calendar.soton.ac.uk

Further information about, or clarification of, these procedures is available from Admissions Team, Student and Academic Administration, University of Southampton, Southampton SO17 1BJ, email: admissions@soton.ac.uk.

Data Protection

During the application procedure, the University will be provided with personal information relating to the applicant. An applicant's personal data will be held and processed by the University in accordance with the requirements of the Data Protection Act 1998.

© University of Southampton 2016

A copy of this brochure and the University's current information for students with disabilities and specific learning difficulties can be made available, on request, in alternative formats, such as electronic, large print, Braille or audio, and, in some cases, other languages.

Published and produced by Communications and Marketing. Photographs courtesy of: Jon Banfield, and staff and students of the University.

Geography and the wider University at-a-glance

Within Geography and Environment



World-class reputation spanning

100 years

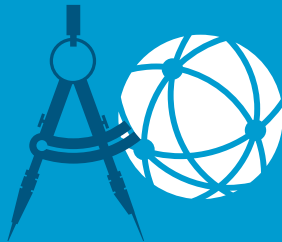
92%

Our score for overall course satisfaction*

National Student Survey 2015



Exciting fieldwork opportunities worldwide



Study abroad at one of 12 institutions across the globe

6th in the UK for research intensity*



Over £15,000,000 awarded in research grants since 2008

Award-winning and highly research-active academic team

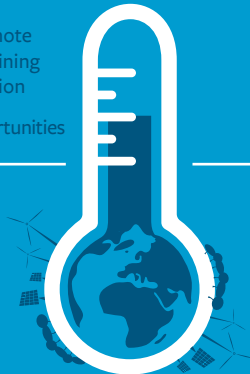
Exciting opportunities for further study:

- Work with organisations like UNESCO on our MSc Sustainability
- Our MSc Applied GIS & Remote Sensing offers excellent training for careers in geo-information
- Full and part-time PhD opportunities

We're helping to monitor the planet's ecosystems through our collaboration with the European Space Agency



We're working to protect livelihoods from the effects of climate change around the world



* Research Excellence Framework 2014
All facts correct as of January 2016

Across campus

Access to virtual learning

24 hours
a day



5 libraries
holding around
3 million
books and journals

Over 2,200
networked
computers for
student use

9 gyms
6 on campus and
3 more in the city



330
seat cinema



1,700
capacity
nightclub

3 internationally
renowned
arts venues



94% of our full-time
graduates in 2013/14 were in
employment or progressed to
further study within 6 months*

More than 350
clubs and societies,
with over 12,000 members



13 successful
spin-out
companies
since 2000

Over 150
volunteering
roles every year are
offered in over

130 organisations
such as the British Red Cross
and Save the Children

6

UK
campuses

1

campus in
Malaysia



Over
350
undergraduate
courses

World-leading
research facilities
include a wind tunnel
complex and 140m
towing tank

1,000

At any one time we are working with
over 1,000 external organisations



£25m

The amount the University is
fundraising for a world-leading Centre
for Cancer Immunology

www.southampton.ac.uk/ambition
UK and EU enquiries:
ugapply.fshms@southampton.ac.uk
+44 (0)23 8059 3760

International enquiries:
global@southampton.ac.uk
+44 (0)23 8059 9699



We are using mobile phone data to monitor
the movement of people affected by
natural disasters such as earthquakes in
order to help with relief efforts



When finished with this document please recycle it.